

CERTIFICATE OF LOCATION OF GOVERNMENT CORNER

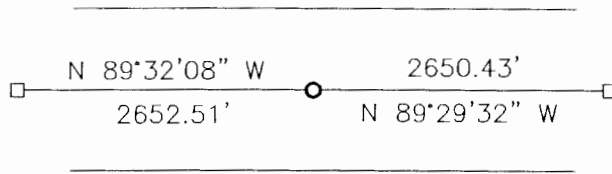
NORTH QUARTER Corner of Section 12, Township 108, Range 39, 5TH P.M.

STATE OF MINNESOTA, County of MURRAY

At the corner location shown on the sketch:

- On _____ found a _____
DATE
- left monument as found, lowered monument, removed monument (explain)
- On 12-14-2004 placed a 1" PIPE WITH SEAL #11943
DATE

SKETCH OF REFERENCE TIES



Minnesota State Plane Coordinate
 System Murray County Datum
 NAD83 (1996)

N: 221713.857
 E: 577131.179

Statement of evidence relative to this corner location is on back of page.

I hereby certify that this document and the data contained herein was prepared by me or under my direct supervision.

Ayle E. Murray June 1, 2007
SIGNATURE DATE

Registration No. 119403

- Land Surveyor, Professional Engineer
 County Surveyor, County Engineer

OFFICE OF THE COUNTY RECORDER
 County of _____

I hereby certify that this document was filed in the Co. Recorders office at _____ .M on the _____ day of _____ A.D. 20 _____

County Recorder _____

By _____, Deputy

DOCUMENT NO. _____

Statement of Evidence

In 1861, Lewis Brockmann did the original subdivision of the township.

On December 14, 2004, Bueltel-Moseng Land Surveying dug by hand and probed and found nothing. We set a 1" iron pipe with seal #11943 in the center of the road and in line with the fence.